



www.timboxx.com



20
26

KATALOG

www.timboxx.com



ABOUT US

For contractors, businesses of all sizes, or locations with limited access where a garden shed is not a viable option, TIM offers a wide range of flat pack products for sale, including flat pack containers, flat pack storage units, and flat pack bundled chemical storage containers.

These flat pack containers are ideal for small businesses where vehicle access is restricted. They have also been supplied to many major contractors to provide site storage solutions in locations such as multi-storey car parks and undercroft areas. When used in combination with our flat pack cabins, they can meet all legally required welfare and social facility needs.

Flat pack storage containers are also ideal as steel garden sheds, offering a robust and maintenance-free alternative to wooden sheds. You can purchase online, complete the online enquiry form, or contact our container sales team directly.

Do you need storage space? The Timboxx demountable container is the ideal solution for this requirement. Thanks to our wide product range, we can provide additional storage space in a very short time, for example in your garden or at your business premises. You can explore our products below.

Wide Range of Demountable Containers

At Self-Build Container, we offer a comprehensive range of containers. A demountable container can be used as either temporary or permanent storage in a variety of situations. Our storage containers are frequently preferred as material containers or site containers. Additionally, containers can be manufactured in all RAL Classic colours to create a more distinctive appearance.

A Timboxx container includes roof, door, and floor panels.

Do you need extra storage space for your garden?

A container garden house is the ideal addition to any garden. Thanks to its compact structure, it is suitable for gardens of all sizes.

Coloured Container

A coloured container is both a practical and aesthetically pleasing solution for your storage needs. It is particularly convenient for contractors working with construction companies and can be used in various situations. A self-build container, for example, can be used as temporary storage during renovation projects. It is also suitable as a unit for self-storage companies.

The container can be painted in any RAL colour of your choice. The main advantage of a coloured container is that it comes with a 1-year anti-corrosion guarantee. The container is fully demountable, allowing for easy transportation and installation in areas with restricted access.

"Our self-build containers are delivered as flat pack kits, enabling assembly at any location. Coloured containers are available in all sizes and all RAL colours."

CONTENTS

ABOUT US	2
LASER CUTTING	4-5
CONTAINER	6-7
SOLAR PANEL MOUNTING SYSTEMS	8
STEEL SHELVING ACCESSORIES	8
WAREHOUSE CONTAINERS	9
CONTAINER DOOR	9
PRESS BRAKE BENDING	10-11
SPOT RESISTANCE WELDING	12
WELDING	13
ELECTROSTATIC POWDER COATING CONVEYOR LINE	14-15
ASSEMBLY & PACKAGING	16-17
CONTACT	20





LASER CUTTING

Thanks to our advanced laser cutting technology, we provide high-precision cutting services for sheet metals up to 2 m × 6 m in size. Our infrastructure, capable of processing galvanized (GLV), stainless steel, black steel, aluminum, and DKP sheet metals, enables clean, smooth, and dimensionally accurate cuts in thicknesses ranging from 0.5 mm to 25 mm, thanks to our powerful motor capacity.

Our services include laser cutting of galvanised steel, cold-rolled steel (DKP), aluminium, and stainless steel, meeting the requirements of a wide range of industrial and manufacturing applications. Thanks to our modern laser cutting systems, we achieve consistent quality, smooth edges, and minimal material waste.

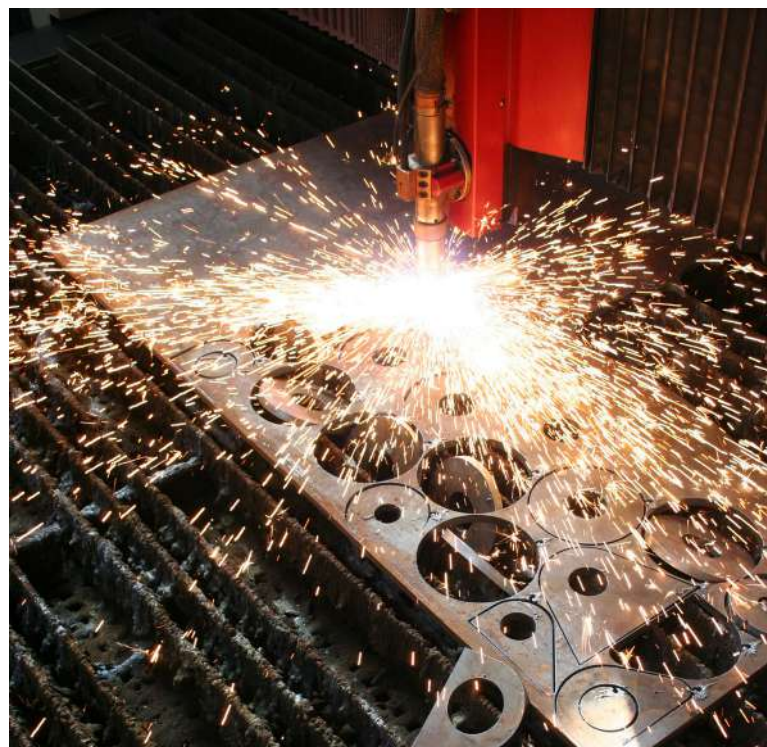
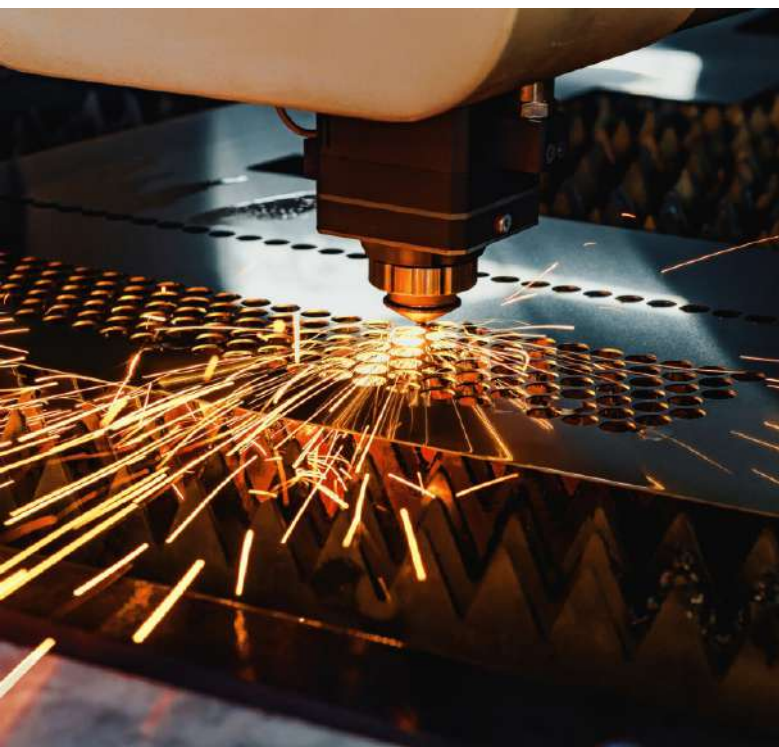
Whether for small-batch production or large-scale industrial projects, our laser cutting services offer high efficiency, precision, and flexibility, supporting custom designs and complex geometries with fast turnaround times. Laser cutting is an advanced manufacturing technology that enables contactless and high-precision processing of materials using a high-energy-density laser beam. Cutting and forming operations are performed with micron-level accuracy and high repeatability through CNC-based software systems.

Its die-free structure eliminates setup time and tooling costs. While high cutting speeds make it suitable for mass production, the low heat-affected zone minimises material deformation and ensures smooth, burr-free cutting surfaces.

The fully automated process reduces operator related errors, enhances workplace safety, and minimises material waste. Requiring no additional consumables, laser cutting technology is an ideal solution for high efficiency, sustainability, and the precise production of complex geometries.

Laser cutting offers high design flexibility, enabling the precise production of complex patterns, sharp corners, and fine details that are difficult to achieve with conventional methods. This makes it suitable for architectural components, industrial parts, and custom metal products requiring tight tolerances.

With the ability to process a wide range of materials and thicknesses, laser cutting provides a fast, reliable, and flexible manufacturing solution. Its speed, accuracy, and automation improve production efficiency, reduce lead times, and ensure consistent quality across various industries.



CONTAINER



CONTAINER

We offer a comprehensive range of flat pack and demountable container solutions designed for contractors, businesses of all sizes, and individual users. Our containers are engineered for areas with restricted vehicle access, making them ideal for locations with limited entry.

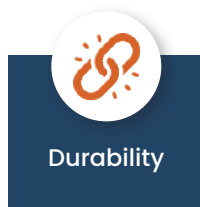
Our flat pack containers are widely used in challenging environments such as multi-storey car parks, undercroft areas, and confined construction sites, providing reliable site storage solutions. When combined with our flat pack cabins, they also allow for the creation of legally required on-site welfare facilities.

Designed for versatility, our containers are suitable for temporary or permanent storage, material handling, or site use. They also serve as a durable, maintenance-free steel alternative to traditional wooden garden sheds.

All containers are supplied in demountable (self-assembly) format for easy transport and installation, even in hard-to-reach locations. Each unit includes roof, door, and floor panels and can be produced in any RAL Classic colour, offering both functional and aesthetic flexibility.



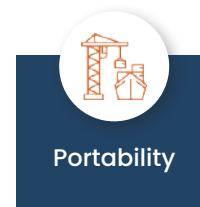
Waterproofing



Durability



Modularity



Portability

CHOOSE YOUR CONTAINER

Flexible Pricing

1 What are the advantages of a DIY Container?

It offers many advantages, particularly in terms of storage and organisation. A DIY container allows for customisation, enabling you to determine the size, shape, and design according to your specific needs. This level of flexibility allows you to use available space more efficiently compared to standard containers and to store items of various shapes and sizes more effectively.

2 What can I purchase from a DIY container?

A DIY container offers components for building or customising storage units, tiny houses, offices, or retail spaces. Typical products include prefabricated modules, insulation, doors, windows, electrical and plumbing components, flooring, and customisation accessories. Some suppliers may also offer design support or turnkey solutions.

3 Can I assemble a demountable container myself?

A DIY container offers components for building or customising storage units, tiny houses, offices, or retail spaces. Typical products include prefabricated modules, insulation, doors, windows, electrical and plumbing components, flooring, and customisation accessories. Some suppliers may also offer design support or turnkey solutions.

EASY INSTALLATION

ADVANTAGE OF EASY INSTALLATION

This refers to the ability of the containers to be installed quickly and easily. The installation area requires no extensive preparation, and the setup process is fast and practical. The easy installation feature ensures that the containers are ready for use in a short time, providing significant time savings.



1



2



3



4



SOLAR PANEL MOUNTING SYSTEMS



Solar energy investments require durable mounting systems capable of withstanding harsh climate conditions in both ground-mounted and rooftop applications. Therefore, mounting components must offer high resistance to temperature fluctuations, snow loads, strong winds, and corrosion. A solid and reliable structure is the foundation of any solar power system.

Thanks to its high strength, corrosion resistance, and long service life, aluminum is the ideal material for solar mounting systems. Aluminum profile systems designed for on-site fabrication enable fast and error-free installation. Once the supporting structure is installed, panel mounting becomes easy, allowing Solar Energy Systems (SES) to operate safely for many years without requiring maintenance.



STEEL SHELVING ACCESSORIES

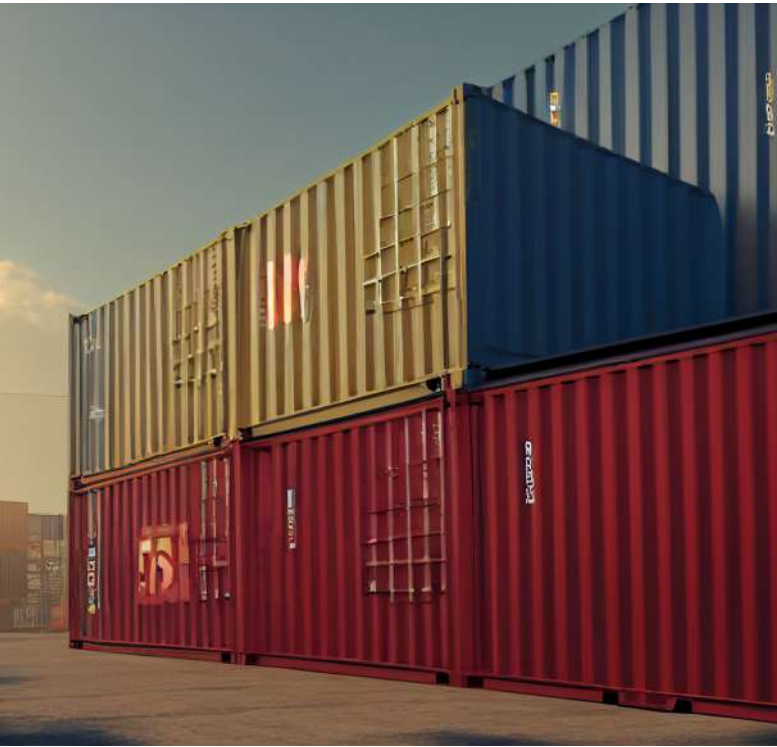


Steel shelving systems offer maximum stacking capacity thanks to their high load-bearing performance. Their robust structure and resistance to deformation ensure safe and long-lasting use. With a wide range of applications, these systems provide an effective and economical solution for maintaining order in storage areas.

Thanks to their corrosion-resistant properties, steel shelving systems can be used in manufacturing and industrial facilities, warehouses, retail stores, supermarkets, and office environments. Easy to install, they allow products to be stored in an organized and secure manner. Their rigid and durable construction ensures reliable performance for many years.



WAREHOUSE CONTAINERS

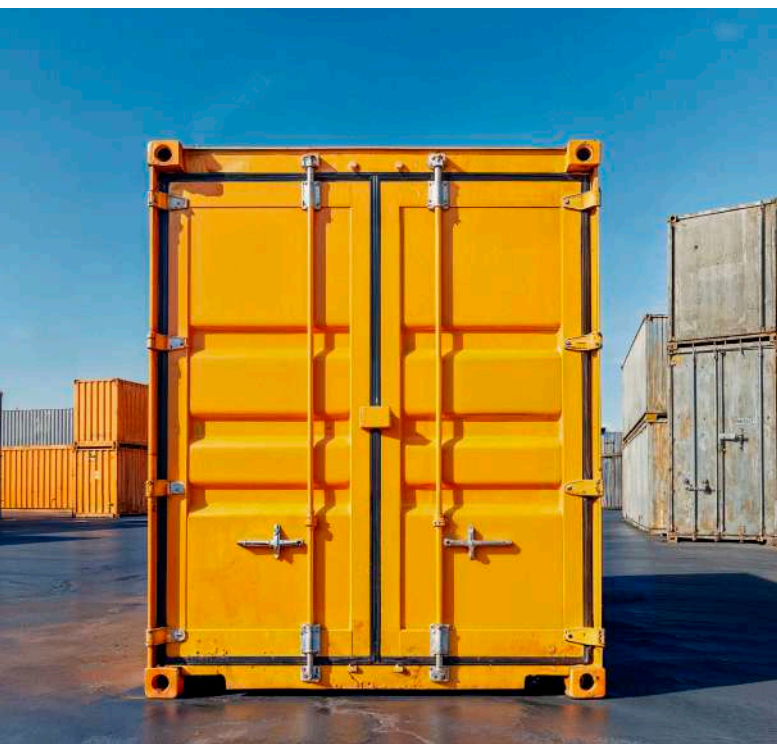


Storage containers are versatile and practical solutions designed for the safe storage of goods and personal belongings. Thanks to their portable structure, they provide a cost-effective alternative to renting or purchasing traditional warehouse spaces. Storage containers can be manufactured in custom dimensions, either by modifying cargo containers or as steel construction units.

They can be produced as insulated or non-insulated according to requirements. With antibacterial flooring options and ventilation louvers that ensure natural airflow, stored items are protected against moisture and humidity. Air conditioning systems can also be installed, making it possible to store sensitive products such as food or pharmaceuticals under controlled conditions.



CONTAINER DOOR



Container doors are manufactured from durable materials such as steel, aluminum, or PVC, offering solutions for various usage needs. They can be produced in single-leaf, double-leaf, sliding, or folding designs and in different sizes to ensure full compatibility with container structures.

The production process includes precise measurement, material cutting, assembly, and optional painting or coating, ensuring strength and long service life. Designed to withstand external impacts, container doors provide reliable security while offering ergonomic operation and an aesthetic appearance that complements the overall container design.

PRESS BRAKE BENDING



PRESS BRAKE BENDING

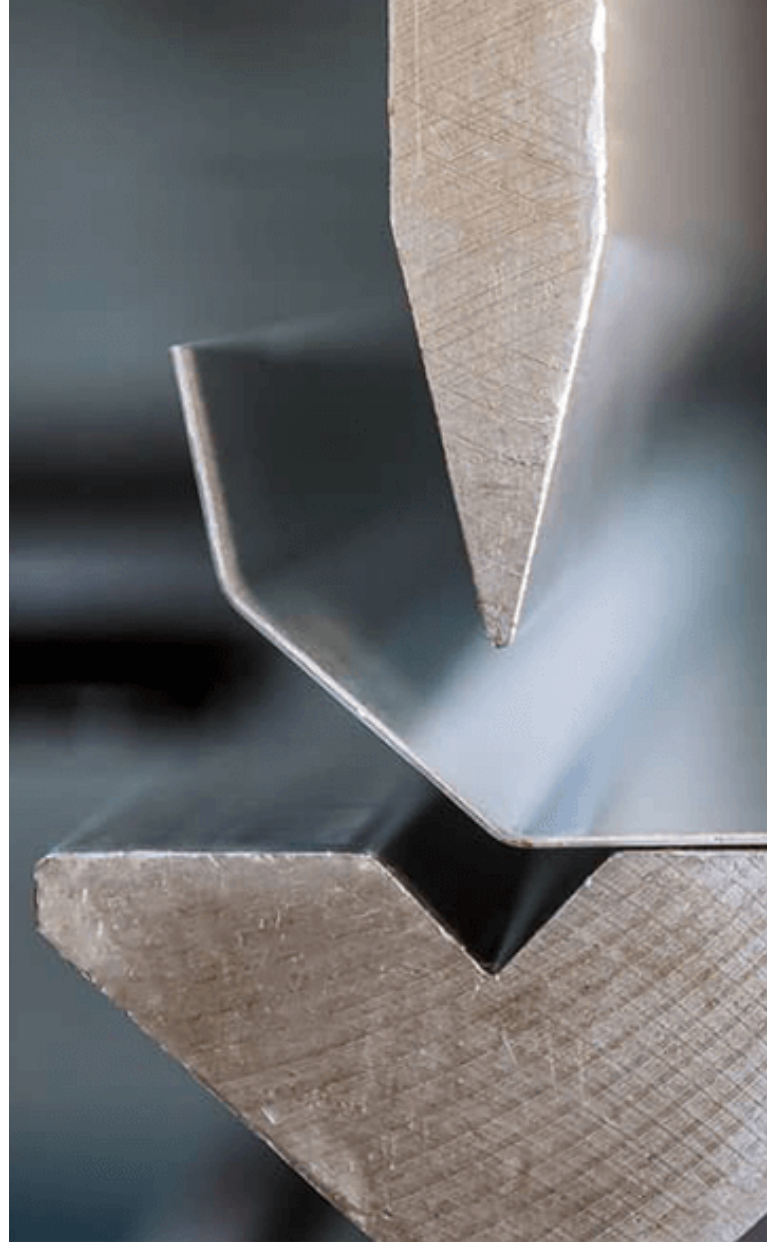
We provide professional press brake bending services using high-tonnage, CNC-controlled equipment with bending capacities of up to 8.5 metres, ensuring high precision and dimensional consistency for large-scale and complex metal components. Our extensive machinery and tooling inventory includes standard 27 mm and 35 mm market-type trapezoidal bending dies, allowing trapezoidal bending in custom dimensions. In addition, thanks to our wide range of tooling options, we are capable of producing complex bending applications such as full-crush bends, while safely processing sheet metals with thicknesses ranging from 0.5 mm to 12 mm in full compliance with project requirements.

Our advanced press brake technology ensures precise angle control, repeatable dimensions, and smooth bending surfaces, guaranteeing consistently high quality standards. Supported

by our experienced operators and quality-driven production approach, even components with complex geometries are manufactured with minimal tolerance deviations, resulting in flawless outcomes both functionally and aesthetically.

Our press brake bending services cover a wide production range, from single-piece custom manufacturing to high-volume serial production. They are reliably used across various sectors, including industrial facilities, construction projects, machinery and equipment manufacturing, metal fabrication, and infrastructure applications. Our production processes are optimised for efficiency and time management, ensuring consistent and reliable delivery schedules.

Whether you require simple linear bends or multi-angle, complex-shaped metal components, our press brake bending services deliver high precision, operational efficiency, and long-term durability. With project-specific solutions, we aim to support your production processes while combining quality, reliability, and sustainability in every solution.





SPOT RESISTANCE WELDING

We provide Resistance Spot Welding services, commonly known as spot (tack) welding, to deliver high-strength, precise, and repeatable joints for sheet metal components and assemblies. This welding method is particularly well suited to high-speed production environments due to its short cycle times, low heat input, and compatibility with automated manufacturing systems. It is an ideal solution for applications where consistent quality, dimensional accuracy, and structural reliability are essential. As a result, resistance spot welding is widely used in industries such as automotive, white goods, metal furniture, and industrial equipment manufacturing.

In addition to resistance spot welding, our production capabilities include gas-shielded arc welding (MIG/MAG) and a wide range of comprehensive welded fabrication solutions. By combining multiple welding techniques within a single production workflow, we are able to manufacture complex welded structures, sub-assemblies, and complete metal constructions that meet demanding mechanical and functional requirements. This integrated approach ensures greater production efficiency, improved structural performance, and optimized manufacturing processes.

Our flexible manufacturing approach allows us to adapt welding processes to customer specifications, material types, and project-specific performance criteria. From prototype development to serial production, welding parameters are carefully selected to ensure optimal joint strength, consistent weld quality, and minimal distortion across all components.

Our experienced and certified welding team ensures high weld integrity, dimensional consistency, and long-term durability across all projects. Rigorous quality control procedures and continuous process monitoring are implemented throughout production to maintain uniform standards and repeatable results. From light-gauge sheet metal components to heavy-duty welded structures, we deliver efficient, reliable, and sustainable welding solutions that support a wide range of industrial applications.

WELDING

GAS METAL ARC WELDING (GMAW)

Is a highly efficient and widely used welding process that employs a continuously fed wire electrode and shielding gas to produce strong, clean, and high quality welds with excellent penetration and minimal spatter. The controlled heat input ensures consistent weld quality while reducing distortion, making it ideal for welding cut and press-brake bent components with high precision and reliable joint performance. With fast welding speeds, high repeatability, and compatibility with automated and semi automated systems, GMAW supports large-scale production across a wide range of materials and thicknesses, while maintaining stable arc performance and consistent heat control. This optimized process enhances production efficiency, reduces rework and downtime, and ensures long term structural integrity, ultimately delivering durable, structurally sound, and dimensionally accurate welded structures for demanding industrial and manufacturing applications. Its flexibility and reliability make GMAW a preferred solution for both custom manufacturing and high volume production environments.



ELECTROSTATIC POWDER COATING CONVEYOR SYSTEM



Our facility operates an advanced electrostatic powder coating line designed to deliver high-quality, durable, and uniform surface finishes on sheet metal components. The coating performance is achieved through a precisely controlled process that combines thorough surface preparation, robotic powder application, and controlled oven curing.

The process begins with chemical surface cleaning in multi-stage washing baths, where sheet metal components are treated with specialized chemical solutions to remove oils, dirt, and surface contaminants. This stage ensures effective surface activation and optimal adhesion of the powder coating. After chemical treatment, the components pass through a rinsing and drying unit, where all residual liquids are completely removed and the surfaces are fully dried in preparation for coating.

Once surface preparation is complete, the parts are transferred to the robotic electrostatic powder coating unit. Using automated robotic systems, electrostatic powder paint is applied evenly to the

surface at the required micron thickness. This robotic application ensures consistent coating distribution, precise thickness control, and high surface quality across all components.

Following the coating stage, the painted components are conveyed into the curing oven, where they are baked at temperatures of approximately 190–200°C for 9–10 minutes. During this curing process, the powder coating melts, flows, and chemically bonds to the metal surface, forming a durable, uniform, and highly resistant coating layer.

This electrostatic powder coating and oven curing process provides excellent corrosion resistance, strong surface adhesion, and a high-quality aesthetic finish. The system is suitable for both low-volume and high-volume production, ensuring consistent results, reduced rework, and long-term protection for a wide range of industrial applications.





Assembly & Packaging

As the final and one of the most critical stages of our production process, we provide professional assembly and packaging services with a systematic and quality-oriented approach. All components manufactured through advanced production processes such as container fabrication, laser cutting, press brake bending, resistance spot welding, and electrostatic powder coating are transferred to our assembly lines in a controlled, traceable, and well-coordinated manner, in full accordance with project technical specifications, engineering drawings, quality documentation, and specific customer requirements.

Our assembly process is carefully structured to ensure dimensional accuracy, mechanical strength, structural stability, and functional integrity of each product. Every assembly operation is carried out in line with predefined work instructions, technical documentation, and standardized quality control procedures. Our experienced and highly trained assembly team performs all stages from detailed sub assemblies to complete product assembly with exceptional precision, technical expertise, and attention to detail. Throughout the process, components are systematically verified to ensure compatibility, alignment, and proper integration within the overall structure.

In-process inspections, verification steps, and final quality checks are conducted at various stages of assembly to guarantee full compliance with technical requirements, engineering tolerances, applicable industry standards, and long-term performance expectations. Any deviations are immediately identified and addressed through corrective actions, ensuring that the final product meets both functional and aesthetic criteria. This structured approach minimizes risk, enhances reliability, and contributes to consistent production excellence.



Following the completion of assembly, the products undergo carefully planned protective packaging procedures prior to shipment. The packaging stage is designed to provide maximum protection against potential impacts, vibrations, moisture exposure, dust, and other environmental factors that may arise during transportation, handling, loading, unloading, and storage conditions. Each product is evaluated individually, and packaging materials and methods are selected according to the product's structural characteristics, dimensions, surface sensitivity, weight distribution, and preferred logistics method.

Where necessary, additional protective measures such as palletizing, securing, cushioning applications, reinforced wrapping, and specialized transport protection solutions are implemented to further enhance shipment safety and maintain product integrity until final delivery. Clear labeling, documentation, and handling instructions are also incorporated to support efficient logistics operations and proper on-site handling.

By managing the entire assembly and packaging process in-house within our production facility, we ensure stronger coordination between departments, optimized workflow management, and faster response capability. This integrated structure increases operational efficiency, maintains consistent quality standards across all stages, and enables full process traceability from component production to final shipment. As a result, we deliver products that not only meet technical and functional expectations but also reflect our commitment to reliability, durability, and customer satisfaction.



GLOBAL EXPORT NETWORK

*TIMBOXX, we export our products from **Türkiye** to **Belgium, the Netherlands, Germany, Austria, the United States of America, the United Kingdom, Ireland, Italy, Hungary, Bulgaria,** and other global markets through a strong manufacturing and logistics infrastructure, delivering solutions that comply with international quality standards and positioning us as a reliable business partner worldwide.*



Reliable Solutions

The Standard of Quality in Containers!

Your Trusted Partner in Container Manufacturing:
Quality Containers, an Essential Part of Your Journey!

TIMBOXX

<http://www.timboxx.com>





E-Posta | +90 533 737 34 11

Telefon | info@timboxx.com

Adres | Susuz Mah. 3788. Cadde No:12/3
Yenimahalle/Ankara

